

Tri-Global Mobile Utility Suite 5.0

Pairing a VLoc Pro with a 2008 Geo Explorer Series

[To Pair a 2005 Geo Explorer Series click here](#)

Start by placing the Geo Explorer in **BLUETOOTH DISCOVERABLE MODE**. Do this by selecting **SETTINGS** from the **START MENU**. On the **SETTINGS** page select the **CONNECTIONS** tab, next click on the **BLUETOOTH** icon. On the **BLUETOOTH** page select the **MODE** tab. On the **MODE** page make sure that both boxes **“TURN ON BLUETOOTH”**, and **“MAKE THIS DEVICE VISABLE TO OTHER DEVICES”** are checked.



Now turn on the VLoc Pro and hold down the Info button (i) to access the **MENU**.



Once in the **MENU** use the (+) button to scroll down the list to **BLUETOOTH PAIRING**. Hit the **ENTER** button to place the VLoc Pro into Bluetooth Pairing Mode. After searching the VLoc Pro should pick up on the Geo Explorer and display **GEOSN*******. Select the Geo by using the (+) to hilite and hit the **ENTER** button.



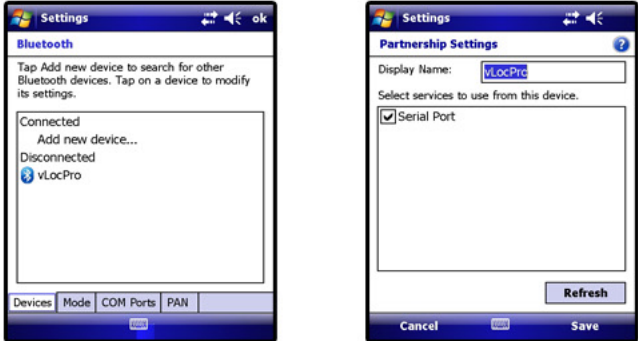
Back on the Geo Explorer you will be alerted that the VLoc Pro wants to connect to your PocketPC (Geo Explorer) Click **YES** and enter **1234** for the **PASSCODE**. You will be alerted that the VLoc Pro has connected with your device and has been added to your devices list.



Tri-Global Mobile Utility Suite 5.0

Pairing a VLoc Pro with a 2008 Geo Explorer Series

On the **DEVICES** tab in the **BLUETOOTH** menu you will see the VLoc Pro is added under the **DISCONNECTED** list. Click on the VLoc Pro and check the **SERIAL PORT** box on the **PARTNERSHIP SETTINGS** page.



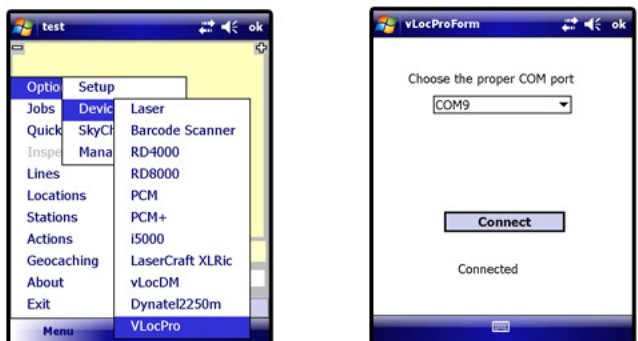
You can now exit the **BLUETOOTH** menu by clicking **OK** in the top right corner, then the **X** in the top right corner of the next page to exit back to the **TODAY** screen.

Now launch **MOBILE UTILITY SUITE** on the Geo Explorer. Open or create a new job.



If the Job Setup form **appears** select **VLoc Pro** as your device and choose **COM9**. Fill out the other options as necessary and click **SAVE**. Select your **JOB** and click **OPEN**. You are brought back to the main map interface and can begin collecting data.

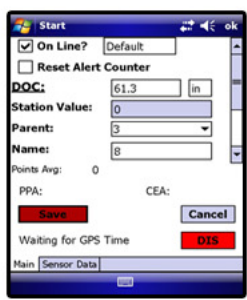
If the Job Setup Form **does not appear**, click on the Mobile Utility Suite **MENU** and select **OPTIONS/DEVICES/VLoc Pro**. Select **COM9** and hit **CONNECT**. You now have Paired the VLoc Pro to the Geo Explorer. Hit **OK** in the top right corner to exit back to the main map interface to begin collecting data.



Tri-Global Mobile Utility Suite 5.0

Pairing a VLoc Pro with a 2008 Geo Explorer Series

To bring VLoc Pro data into Mobile Utility Suite simply press the **(i) INFO** button on the VLoc Pro to capture your locator information and send to the Geo Explorer. By doing this the collection form in Mobile Utility Suite will auto launch and your **DOC** and other locator data will auto populate the form. At this point you may **SAVE** manually by clicking **SAVE**. Or you may wait for your **AUTO CLOSE** settings to take effect and close the form for you. For more information on **AUTO CLOSE** please refer to your Mobile Utility Suite User Guide.



Pairing a VLoc Pro with a 2005 Geo Explorer Series

To pair a **2005 Geo Explorer Series** to a VLoc Pro, proceed as you would with pairing a **2008 Geo Explorer Series**. Once the connection between the Geo and the VLoc Pro has been made, select the **COM PORTS** tab in the Bluetooth Menu on the Geo. Select **NEW INCOMING PORT** and choose **COM 9**.



You can now exit the **BLUETOOTH** menu by clicking **OK** in the top right corner, then the **X** in the top right corner of the next page to exit back to the **TODAY** screen.

Now launch **MOBILE UTILITY SUITE** on the Geo Explorer. Open or create a new job.

If the Job Setup form **appears** select **VLoc Pro** as your device and choose **COM9**. Fill out the other options as necessary and click **SAVE**. Select your **JOB** and click **OPEN**. You are brought back to the main map interface and can begin collecting data.

If the Job Setup Form **does not appear**, click on the Mobile Utility Suite **MENU** and select **OPTIONS/DEVICES/VLoc Pro**. Select **COM9** and hit **CONNECT**. You now have Paired the VLoc Pro to the Geo Explorer. Hit **OK** in the top right corner to exit back to the main map interface to begin collecting data.

To bring VLoc Pro data into Mobile Utility Suite simply press the **(i) INFO** button on the VLoc Pro to capture your locator information and send to the Geo Explorer. By doing this the collection form in Mobile Utility Suite will auto launch and your **DOC** and other locator data will auto populate the form. At this point you may **SAVE** manually by clicking **SAVE**. Or you may wait for your **AUTO CLOSE** settings to take effect and close the form for you. For more information on **AUTO CLOSE** please refer to your Mobile Utility Suite User Guide.