

Currently Supported CSV Header Titles *(headers are case sensitive)*If User selects [LOCATIONS](#) or [STATIONS](#)*Required Fields:*

Latitude (also "Lat") , Longitude (also "Long")

Optional Fields:

LocName, Note, Parent, ParentName

EXAMPLE CSV: *(locations)*

Long	Lat	LocName	Note
-83.4702113	33.9454563	1	Import Example 1
-83.4709526	33.9452964	2	Import Example 2
-83.4709779	33.9452745	3	Import Example 3

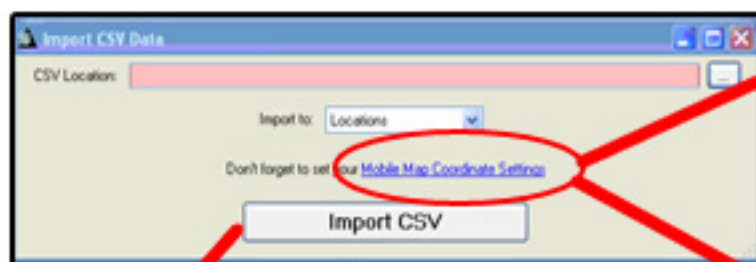
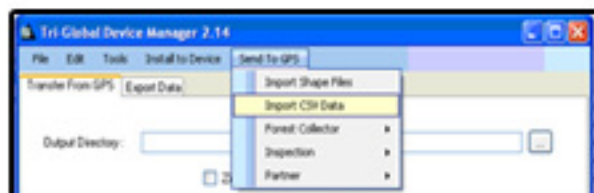
If User selects [PLOTS](#) or [TREES](#)*Required Fields:*

Latitude (also "Lat") , Longitude (also "Long")

*Optional Fields:*Plot (also "PlotNumber") , Stand (also "StandKey")
Compartment, Tract, Note *(note is only for TREES)***EXAMPLE CSV:** *(plots)*

Long	Lat	PlotNumber	StandKey
-83.4702113	33.9454563	1	sk1
-83.4709526	33.9452964	2	sk2
-83.4709779	33.9452745	3	sk3

- After creating your .CSV file you now can use the Device Manager to Import your CSV to your Mobile Device.
- Select [SEND TO GPS](#) on the Device Manager, and click on [IMPORT CSV DATA](#). Browse to the location of your saved CSV file.
 - ***Before Importing your CSV file you need to make absolutely sure that your [Mobile Map Coordinate System](#) is setup to be the same as your [Coordinate System settings](#) inside of the Mobile Utility Suite, or Mobile Resource Suite software.
- Select where you are Importing your CSV to, either [Locations, Stations](#) (MUS), [Plots, Trees](#) (MRS)
- Click on [IMPORT CSV](#)
- After clicking on [IMPORT CSV](#) you will be prompted to select a [JOB](#) to attach the [CSV](#) to. It is best to always [ADD NEW JOB](#). After creating the Job name and Job note, click [CREATE JOB](#).
- After selecting a Job to import the [CSV](#) into, you should get a dialog box stating "[CSV IMPORT COMPLETE](#)"
- Open Mobile Utility Suite, or Mobile Resource Suite and select your Job that you imported the CSV into.
- You can now use your imported CSV data as normal MUS or MRS locations or Plots.
- View the next page for screen captures of this process.



Don't forget to check your Mobile Map Coordinate Settings match your MUS/MRS Coordinate System

