

Mobile Utility Suite Quick Photo Feature

Launch Mobile Utility Suite. Create and open a job if prompted. Once the Mobile Utility Software has loaded you will be brought to the main map interface.



Click on the **MENU** in the bottom left corner of the screen and select **ACTIONS, QUICK PHOTOS**.



Click on the large **TAKE PHOTO** button to be brought into **CAMERA** mode.



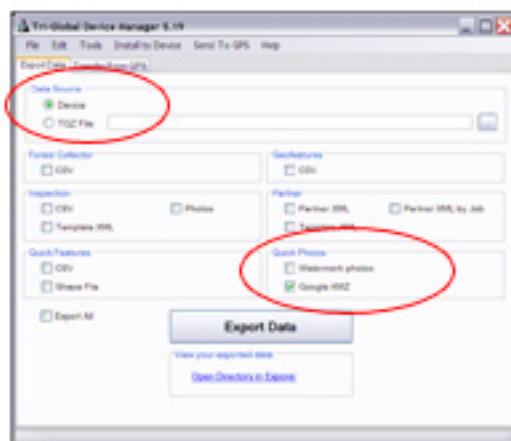
Take a picture of your asset. Next click either **BACK** or **CAMERA** in the lower left corner, or the **OK** to be brought back to the **TAKE PHOTO** screen.



At this time you may take another photo if needed or click **OK** in the top right corner to be brought back to the main map interface.

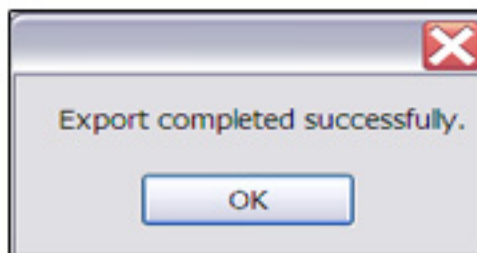
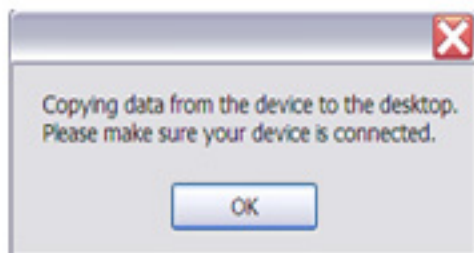
Mobile Utility Suite Quick Photo Feature

To export your photo(s) simply make sure your GPS device is connected to your computer, and launch **TGT DEVICE MANAGER**. On the **EXPORT DATA** tab of Device Manager make sure that **DEVICE** is selected for data source and that one of the two or both **QUICK PHOTO** options are checked as shown below.



Now click on the **EXPORT DATA** tab.

You will see a dialogue box appear stating "Copying data from the device to the desktop. Please make sure your device is connected." Click **OK**. After some time another dialogue box will appear stating "Export completed successfully". Click **OK**



Your data is exported out to **C:\TriglobalData\Exported Data\Device Manager**

Within the Device Manager folder you will see your exported data. Depending on how many times you have exported data you may see multiple folders. The folders are named according to Date and Time of export.

For Example: **2011 0915 161221**
2011 is the YEAR
0915 is the Month, and Date
161221 is the Time: (4:12:21pm)

